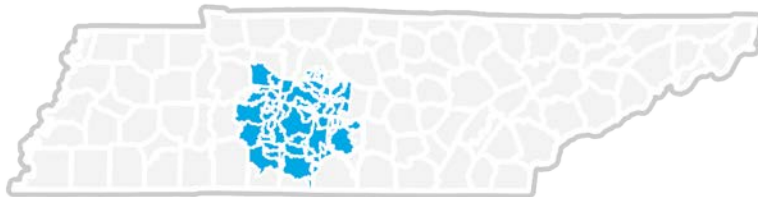


January 13, 2015



Economic Overview

Maury County Labor Shed



DEMOGRAPHIC PROFILE.....	3
EMPLOYMENT TRENDS.....	5
WAGE TRENDS	5
INDUSTRY SNAPSHOT.....	6
OCCUPATIONAL SNAPSHOT.....	8
INDUSTRY CLUSTERS	10
EDUCATION LEVELS	10
REGION DEFINITIONS	11
FAQ	13

Demographic Profile

In 2010, the population in the Maury County Labor Shed* was 834,031.

The region has a civilian labor force of 434,717 with a participation rate of 66.9%. Of individuals 25 to 64 in the Maury County Labor Shed, 35.8% have a bachelor's degree or higher which compares with 26.7% in the nation.

The median household income in the Maury County Labor Shed* is \$59,243 and the median house value is \$210,440.

Demographic Profile¹

	Percent			Value		
	Proxy for Maury County Labor Shed*	Proxy for Maury County Labor Shed*	Nashville-Davidson--Murfreesboro, TN MSA	Proxy for Maury County Labor Shed*	Proxy for Maury County Labor Shed*	Nashville-Davidson--Murfreesboro, TN MSA
Demographics						
Population ²	—	—	—	834,031	834,031	1,674,151
Population Annual Average Growth ²	—	—	2.0%	—	—	29,590
Median Age ³	—	—	—	36.7	36.7	35.7
Under 18 Years	24.9%	24.9%	24.4%	208,073	208,073	387,964
18 to 24 Years	9.4%	9.4%	9.8%	78,756	78,756	156,408
25 to 34 Years	14.1%	14.1%	14.7%	117,323	117,323	234,483
35 to 44 Years	14.1%	14.1%	14.4%	117,889	117,889	228,380
45 to 54 Years	14.7%	14.7%	14.7%	122,892	122,892	234,057
55 to 64 Years	11.5%	11.5%	11.2%	95,508	95,508	178,639
65 to 74 Years	6.3%	6.3%	6.1%	52,547	52,547	97,643
75 Years, and Over	4.9%	4.9%	4.6%	41,043	41,043	72,360
Race: White	82.0%	82.0%	76.9%	683,822	683,822	1,221,951
Race: Black or African American	9.8%	9.8%	15.2%	81,979	81,979	242,264
Race: American Indian and Alaska Native	0.3%	0.3%	0.3%	2,751	2,751	5,182
Race: Asian	2.5%	2.5%	2.3%	20,684	20,684	36,306
Race: Native Hawaiian and Other Pacific Islander	0.0%	0.0%	0.1%	409	409	857
Race: Some Other Race	3.3%	3.3%	3.2%	27,491	27,491	50,712
Race: Two or More Races	2.0%	2.0%	2.1%	16,895	16,895	32,662
Hispanic or Latino (of any race)	6.9%	6.9%	6.6%	57,241	57,241	105,367
Economic						
Labor Force Participation Rate and Size (civilian population 16 years and over) ⁴	66.9%	66.9%	67.8%	434,717	434,717	846,124
Armed Forces Labor Force ⁴	0.2%	0.2%	0.1%	1,021	1,021	1,673
Veterans, Age 18-64 ⁴	6.3%	6.3%	6.7%	33,369	33,369	69,144
Median Household Income ^{3,4}	—	—	—	\$59,243	\$59,243	\$52,779
Poverty Level (of all people) ⁴	13.9%	13.9%	14.0%	113,727	113,727	218,610
Mean Commute Time (minutes) ⁴	—	—	—	25.5	25.5	26.1
Commute via Public Transportation ⁴	0.6%	0.6%	1.1%	2,355	2,355	8,643
Union Membership ⁵	—	—	4.4%	—	—	—
Housing						
Total Housing Units ⁴	—	—	—	348,569	348,569	667,897
Median House Value (of owner-occupied units) ^{3,4}	—	—	—	\$210,440	\$210,440	\$173,700

Demographic Profile¹

	Percent			Value		
	Proxy for Maury County Labor Shed*	Proxy for Maury County Labor Shed*	Nashville-Davidson--Murfreesboro, TN MSA	Proxy for Maury County Labor Shed*	Proxy for Maury County Labor Shed*	Nashville-Davidson--Murfreesboro, TN MSA
Homeowner Vacancy ⁴	2.2%	2.2%	2.3%	5,057	5,057	9,504
Rental Vacancy ⁴	7.6%	7.6%	8.1%	8,345	8,345	18,168
Renter-Occupied Housing Units (% of Occupied Units) ⁴	31.5%	31.5%	33.2%	100,159	100,159	202,157
Occupied Housing Units with No Vehicle Available (% of Occupied Units) ⁴	5.0%	5.0%	5.3%	15,893	15,893	32,436
Social						
No High School Diploma (educational attainment, age 25-64) ⁴	10.5%	10.5%	11.1%	47,732	47,732	97,488
High School Graduate (educational attainment, age 25-64) ⁴	27.0%	27.0%	27.5%	122,739	122,739	241,772
Some College, No Degree (educational attainment, age 25-64) ⁴	20.3%	20.3%	21.6%	92,045	92,045	189,908
Associate's Degree (educational attainment, age 25-64) ⁴	6.5%	6.5%	7.0%	29,313	29,313	61,084
Bachelor's Degree (educational attainment, age 25-64) ⁴	23.7%	23.7%	22.2%	107,883	107,883	194,861
Postgraduate Degree (educational attainment, age 25-64) ⁴	12.0%	12.0%	10.7%	54,662	54,662	93,598
Enrolled in Grade 12 (% of total population) ⁴	1.4%	1.4%	1.4%	11,631	11,631	21,951
Disabled, Age 18-64 ⁴	9.5%	9.5%	9.5%	50,244	50,244	97,470
Foreign Born ⁴	7.8%	7.8%	7.4%	65,193	65,193	118,444
Speak English Less Than Very Well (population 5 yrs and over) ⁴	4.8%	4.8%	4.5%	37,409	37,409	66,738

Source: [JobsEQ®](#)

1. Census 2010, unless noted otherwise

2. Census 2013, annual average growth rate since 2003

3. Median values for certain aggregate regions (such as MSAs) may be estimated as the weighted averages of the median values from the composing counties.

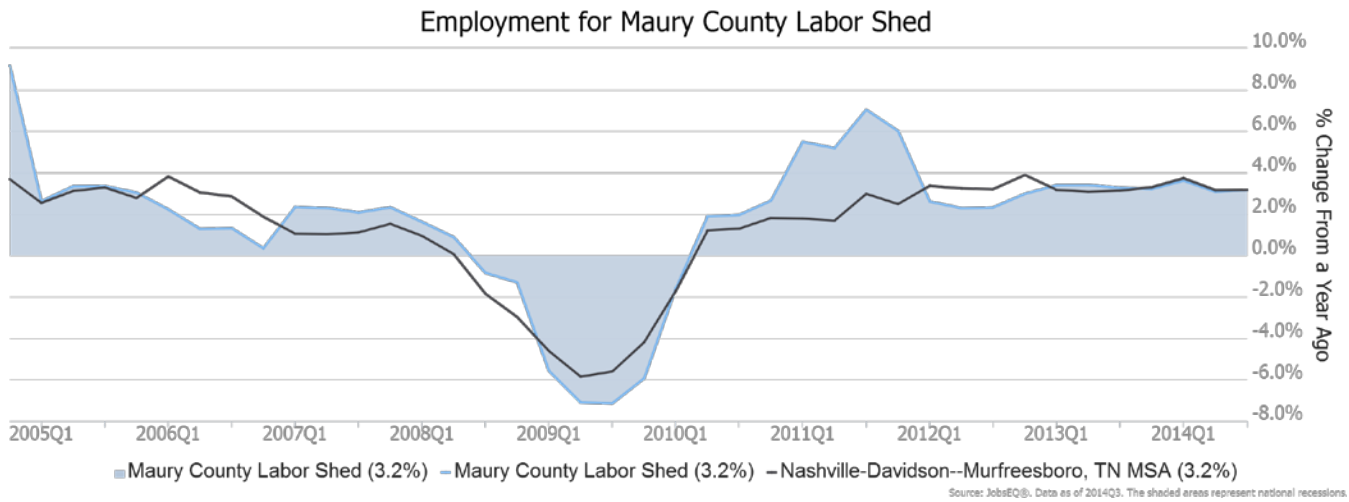
4. ACS 2008-2012

5. 2013; Current Population Survey, unionstats.com, and Chmura

* This user-defined region contains one or more partial ZCTA areas. Any such partial ZCTA within this region definition has been replaced by the full ZCTA for purposes of being described via the above data.

Employment Trends

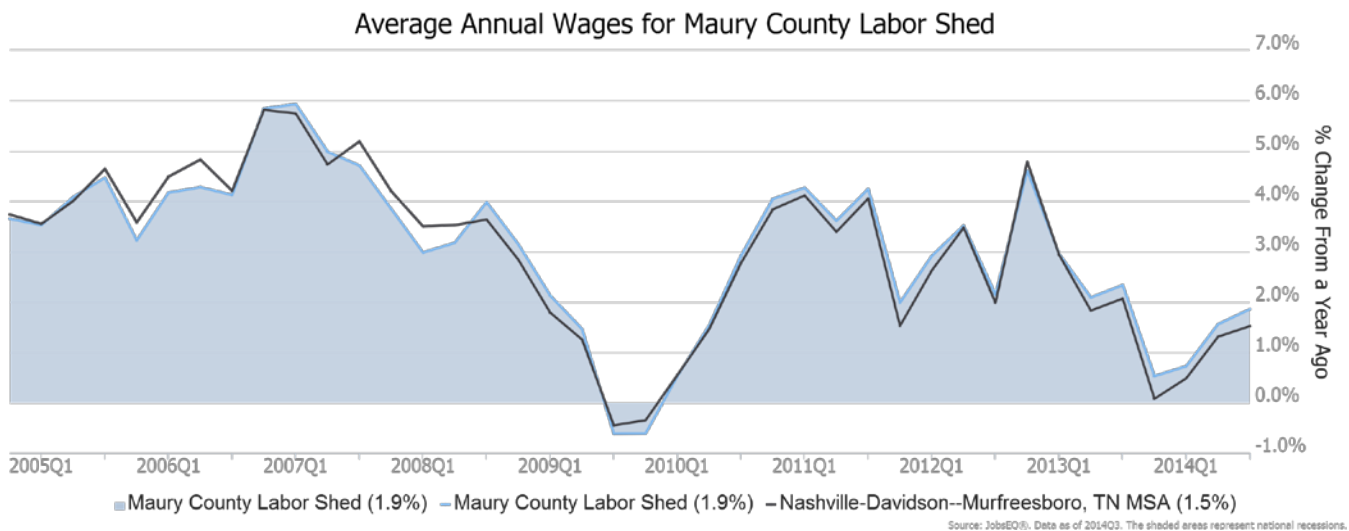
As of 2014Q3, total employment for the Maury County Labor Shed was 519,112 (based on a four-quarter moving average). Over the year ending 2014Q3, employment increased 3.2% in the region.



Employment data are derived from the Quarterly Census of Employment and Wages, provided by the Bureau of Labor Statistics and imputed where necessary. Data are updated through 2014Q1 with preliminary estimates updated to 2014Q3.

Wage Trends

The average worker in the Maury County Labor Shed earned annual wages of \$49,602 as of 2014Q3. Average annual wages per worker increased 1.9% in the region during the preceding four quarters. For comparison purposes, annual averages wages were \$51,291 in the nation as of 2014Q3.

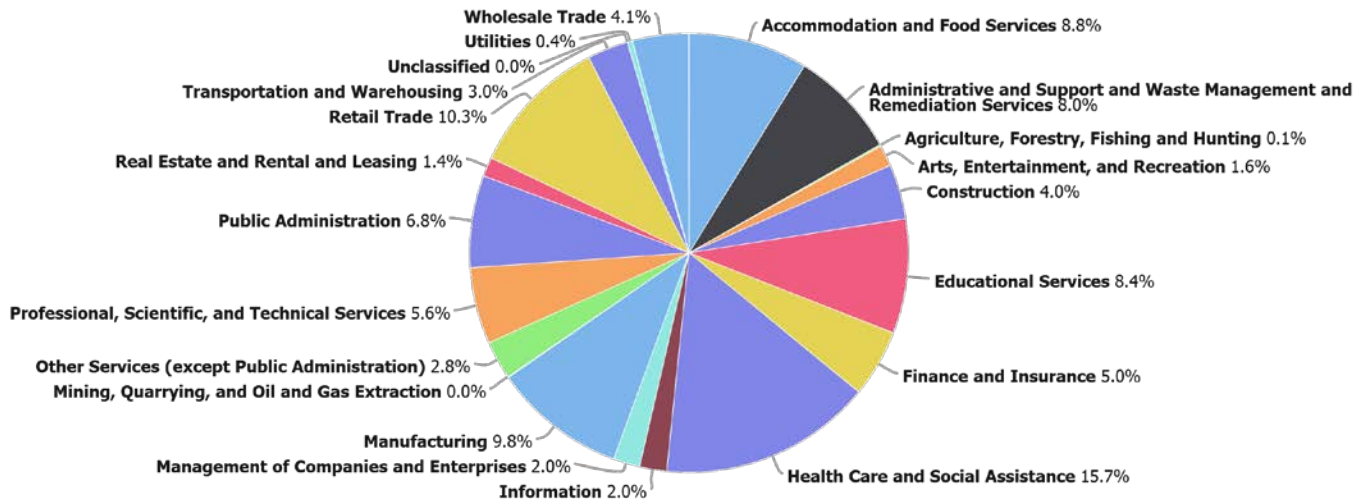


Annual average wages per worker data are derived from the Quarterly Census of Employment and Wages, provided by the Bureau of Labor Statistics and imputed where necessary. Data are updated through 2014Q1 with preliminary estimates updated to 2014Q3.

Industry Snapshot

The largest sector in the Maury County Labor Shed is Health Care and Social Assistance, employing 81,468 workers. The next-largest sectors in the region are Retail Trade (53,568 workers) and Manufacturing (50,978). High location quotients (LQs) indicate sectors in which a region has high concentrations of employment compared to the national average. The sectors with the largest LQs in the region are Public Administration (LQ = 1.28), Administrative and Support and Waste Management and Remediation Services (1.26), and Management of Companies and Enterprises (1.25).

Total Workers for Maury County Labor Shed by Industry



Source: JobsEQ®, Data as of 2014Q3

Employment data are derived from the Quarterly Census of Employment and Wages, provided by the Bureau of Labor Statistics and imputed where necessary. Data are updated through 2014Q1 with preliminary estimates updated to 2014Q3.

Sectors in the Maury County Labor Shed with the highest average wages per worker are Mining, Quarrying, and Oil and Gas Extraction (\$187,821), Management of Companies and Enterprises (\$126,117), and Finance and Insurance (\$82,335). Regional sectors with the best job growth (or most moderate job losses) over the last 5 years are Administrative and Support and Waste Management and Remediation Services (+10,867 jobs), Accommodation and Food Services (+8,367), and Health Care and Social Assistance (+7,623).

Over the next 10 years, employment in the Maury County Labor Shed is projected to expand by 120,956 jobs. The fastest growing sector in the region is expected to be Construction with a +3.5% year-over-year rate of growth. The strongest forecast by number of jobs over this period is expected for Health Care and Social Assistance (+29,080 jobs), Administrative and Support and Waste Management and Remediation Services (+13,750), and Retail Trade (+11,583).

Ad-Hoc Snapshot in Maury County Labor Shed

NAICS	Industry	Current			Total Change over the Last 5 Years	Historical			Forecast		
		Four Quarters Ending with 2014q3				Average Annual % Change in Employment 2009q3-2014q3			Over the Next 10 Years		
		Empl	Avg. Annual Wages	Location Quotient	Empl	Maury County Labor Shed	Maury County Labor Shed	Nashville-Davidson--Murfreesboro, TN MSA	Total Approx Repl Demand	Total Growth Demand	Avg. Annual Growth Percent
11	Agriculture, Forestry, Fishing and Hunting	688	\$33,155	0.15	59	1.8%	1.8%	1.0%	251	57	0.8%
21	Mining, Quarrying, and Oil and Gas Extraction	242	\$187,821	0.08	-25	-2.0%	-2.0%	14.4%	64	55	2.1%
22	Utilities	1,986	\$60,229	0.64	-938	-7.4%	-7.4%	-0.8%	519	105	0.5%
23	Construction	20,843	\$52,559	0.88	669	0.7%	0.7%	-0.6%	4,827	8,519	3.5%
31	Manufacturing	50,978	\$54,293	1.10	7,588	3.3%	3.3%	2.7%	12,464	5,803	1.1%
42	Wholesale Trade	21,481	\$67,089	0.97	571	0.5%	0.5%	1.3%	5,088	3,564	1.5%
44	Retail Trade	53,568	\$29,654	0.91	4,845	1.9%	1.9%	1.6%	18,198	11,583	2.0%
48	Transportation and Warehousing	15,718	\$49,211	0.78	2,042	2.8%	2.8%	3.5%	4,333	2,046	1.2%
51	Information	10,449	\$70,013	0.96	-575	-1.1%	-1.1%	-0.9%	2,610	839	0.8%
52	Finance and Insurance	25,821	\$82,335	1.19	2,402	2.0%	2.0%	1.6%	6,802	6,774	2.4%
53	Real Estate and Rental and Leasing	7,394	\$48,611	0.93	1,207	3.6%	3.6%	3.4%	1,812	1,641	2.0%
54	Professional, Scientific, and Technical Services	29,189	\$81,448	0.91	5,502	4.3%	4.3%	4.2%	7,020	10,928	3.2%
55	Management of Companies and Enterprises	10,132	\$126,117	1.25	3,082	7.5%	7.5%	7.7%	2,364	2,251	2.0%
56	Administrative and Support and Waste Management and Remediation Services	41,457	\$35,403	1.26	10,867	6.3%	6.3%	7.0%	10,659	13,750	2.9%
61	Educational Services	43,835	\$43,993	0.94	4,296	2.1%	2.1%	0.6%	10,008	9,062	1.9%
62	Health Care and Social Assistance	81,468	\$53,944	1.08	7,623	2.0%	2.0%	2.2%	18,076	29,080	3.1%
71	Arts, Entertainment, and Recreation	8,097	\$67,283	0.86	1,389	3.8%	3.8%	4.1%	2,704	1,781	2.0%
72	Accommodation and Food Services	45,769	\$17,512	0.96	8,367	4.1%	4.1%	3.6%	17,615	10,255	2.0%
81	Other Services (except Public Administration)	14,761	\$31,255	0.91	1,807	2.6%	2.6%	2.2%	4,075	3,337	2.1%
92	Public Administration	35,202	\$46,046	1.28	5,109	3.2%	3.2%	-2.4%	8,704	1,823	0.5%
99	Unclassified	33	\$39,293	0.05	-28	-11.4%	-11.4%	-12.8%	9	6	1.8%
	Total - All Industries	519,112	\$49,602	1.00	65,858	2.8%	2.8%	2.2%	139,414	120,956	2.1%

Source: [JobsEQ®](#)

Employment data are derived from the Quarterly Census of Employment and Wages, provided by the Bureau of Labor Statistics and imputed where necessary. Data are updated through 2014Q1 with preliminary estimates updated to 2014Q3. Forecast employment growth uses national projections adapted for regional growth patterns.

Occupational Snapshot

The largest major occupation group in the Maury County Labor Shed is Office and Administrative Support Occupations, employing 88,268 workers. The next-largest occupation groups in the region are Sales and Related Occupations (52,618 workers) and Food Preparation and Serving Related Occupations (45,513). High location quotients (LQs) indicate occupation groups in which a region has high concentrations of employment compared to the national average. The major groups with the largest LQs in the region are Healthcare Practitioners and Technical Occupations (LQ = 1.20), Production Occupations (1.20), and Arts, Design, Entertainment, Sports, and Media Occupations (1.16).

Occupation groups in the Maury County Labor Shed with the highest average wages per worker are Management Occupations (\$94,900), Legal Occupations (\$82,400), and Architecture and Engineering Occupations (\$72,500). The unemployment rate in the region varied among the major groups from 2.5% among Legal Occupations to 9.6% among Food Preparation and Serving Related Occupations.

Over the next 10 years, the fastest growing occupation group in the Maury County Labor Shed is expected to be Healthcare Support Occupations with a +3.2% year-over-year rate of growth. The strongest forecast by number of jobs over this period is expected for Office and Administrative Support Occupations (+18,021 jobs) and Sales and Related Occupations (+11,997). Over the same period, the highest replacement demand (occupation demand due to retirements and workers moving from one occupation to another) is expected in Office and Administrative Support Occupations (20,562 jobs) and Sales and Related Occupations (17,503).

Occupation Snapshot in Maury County Labor Shed

SOC	Title	Current					Total Change over the Last 5 Years	Historical			Forecast		
		Four Quarters Ending with 2014q3			2014q3			Average Annual % Change in Empl 2009q3-2014q3			Over the Next 10 Years		
		Empl	Avg. Annual Wages ¹	Location Quotient	Unempl	Unempl Rate		Empl	Maury County Labor Shed	Maury County Labor Shed	Nashville-Davidson--Murfreesboro, TN MSA	Total Repl Demand	Total Growth Demand
11-0000	Management Occupations	25,344	\$94,900	0.97	496	2.6%	3,255	2.8%	2.8%	2.0%	6,295	6,011	2.2%
13-0000	Business and Financial Operations Occupations	29,588	\$63,800	1.14	864	3.8%	4,477	3.3%	3.3%	2.5%	6,785	7,872	2.4%
15-0000	Computer and Mathematical Occupations	13,248	\$70,300	0.92	343	3.3%	2,489	4.3%	4.3%	3.3%	2,197	4,457	2.9%
17-0000	Architecture and Engineering Occupations	7,493	\$72,500	0.82	206	3.4%	729	2.1%	2.1%	1.3%	1,862	1,532	1.9%
19-0000	Life, Physical, and Social Science Occupations	3,676	\$62,000	0.84	104	3.7%	282	1.6%	1.6%	-0.2%	1,277	732	1.8%
21-0000	Community and Social Service Occupations	7,720	\$39,600	1.01	206	3.8%	753	2.1%	2.1%	0.0%	1,991	1,966	2.3%
23-0000	Legal Occupations	3,131	\$82,400	0.79	68	2.5%	461	3.2%	3.2%	0.7%	596	653	1.9%
25-0000	Education, Training, and Library Occupations	30,379	\$41,700	0.94	1,296	5.8%	3,006	2.1%	2.1%	0.7%	6,810	6,994	2.1%
27-0000	Arts, Design, Entertainment, Sports, and Media Occupations	7,852	\$49,100	1.16	439	6.9%	643	1.7%	1.7%	1.2%	2,575	1,368	1.6%
29-0000	Healthcare Practitioners and Technical Occupations	36,016	\$71,800	1.20	678	2.7%	4,215	2.5%	2.5%	2.7%	7,625	11,146	2.7%
31-0000	Healthcare Support Occupations	15,384	\$27,800	1.00	588	5.3%	1,117	1.5%	1.5%	1.8%	3,172	5,637	3.2%

Occupation Snapshot in Maury County Labor Shed

SOC	Title	Current					Historical					Forecast		
		Four Quarters Ending with 2014q3			2014q3		Total Change over the Last 5 Years	Average Annual % Change in Empl 2009q3-2014q3			Over the Next 10 Years			
		Empl	Avg. Annual Wages ¹	Location Quotient	Unempl	Unempl Rate		Empl	Maury County Labor Shed	Maury County Labor Shed	Nashville-Davidson--Murfreesboro, TN MSA	Total Repl Demand	Total Growth Demand	Avg. Annual Growth Percent
0000														
33-0000	Protective Service Occupations	10,759	\$34,700	0.86	338	4.9%	230	0.4%	0.4%	-1.6%	2,898	1,768	1.5%	
35-0000	Food Preparation and Serving Related Occupations	45,513	\$20,400	0.97	3,720	9.6%	7,555	3.7%	3.7%	3.5%	17,408	10,593	2.1%	
37-0000	Building and Grounds Cleaning and Maintenance Occupations	15,980	\$23,400	0.92	1,176	9.5%	2,360	3.2%	3.2%	2.7%	3,764	3,925	2.2%	
39-0000	Personal Care and Service Occupations	14,168	\$23,900	0.87	891	8.3%	2,183	3.4%	3.4%	2.1%	3,784	4,853	3.0%	
41-0000	Sales and Related Occupations	52,618	\$36,600	0.96	2,818	6.5%	4,652	1.9%	1.9%	1.7%	17,503	11,997	2.1%	
43-0000	Office and Administrative Support Occupations	88,268	\$34,200	1.06	4,780	7.0%	11,324	2.8%	2.8%	2.1%	20,562	18,021	1.9%	
45-0000	Farming, Fishing, and Forestry Occupations	876	\$27,300	0.25	67	8.7%	134	3.4%	3.4%	1.0%	291	96	1.0%	
47-0000	Construction and Extraction Occupations	17,947	\$39,300	0.89	1,228	9.4%	1,322	1.5%	1.5%	0.2%	3,699	6,313	3.1%	
49-0000	Installation, Maintenance, and Repair Occupations	19,541	\$41,400	0.98	751	5.1%	2,691	3.0%	3.0%	2.4%	4,882	4,392	2.0%	
51-0000	Production Occupations	40,590	\$34,700	1.20	2,877	8.2%	7,142	3.9%	3.9%	3.7%	8,966	6,770	1.6%	
53-0000	Transportation and Material Moving Occupations	33,020	\$32,500	0.95	2,386	8.6%	4,943	3.3%	3.3%	3.2%	8,382	6,679	1.9%	
00-0000	Total - All Occupations	519,112	\$42,800	1.00			65,962	2.8%	2.8%	2.2%	133,323	123,773	2.2%	

Source: [JobsEQ®](http://www.chmuraecon.com/jobseq)

Note: Figures may not sum due to rounding.

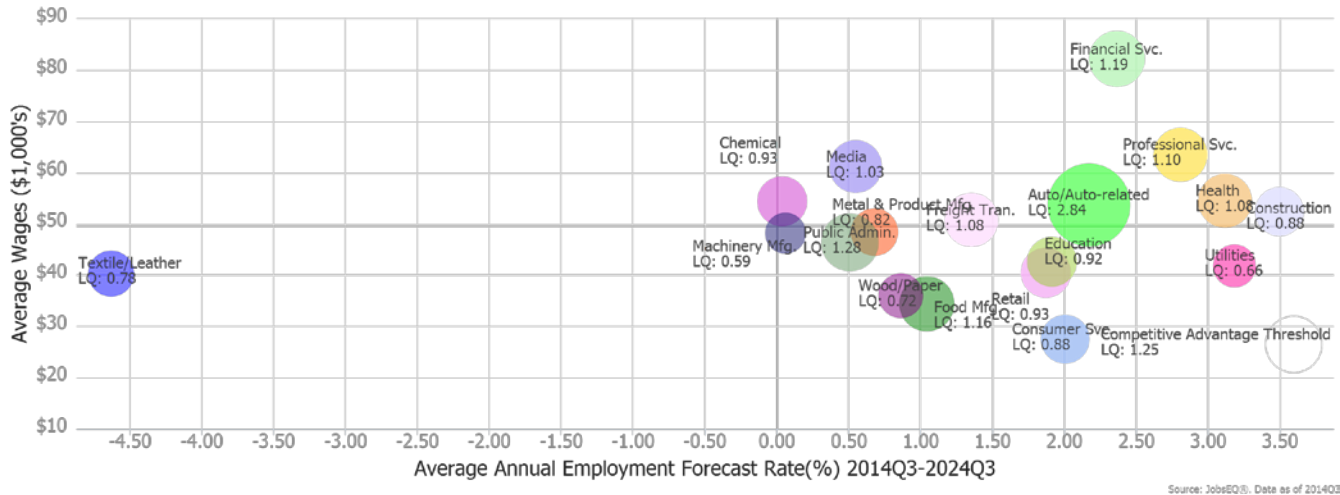
1. Occupation wages are as of 2013

Occupation employment data are estimated via industry employment data and the estimated industry/occupation mix. Industry employment data are derived from the Quarterly Census of Employment and Wages, provided by the Bureau of Labor Statistics and currently updated through 2014Q1, imputed where necessary with preliminary estimates updated to 2014Q3. Wages by occupation are as of 2013 provided by the BLS and imputed where necessary. Forecast employment growth uses national projections from the Bureau of Labor Statistics adapted for regional growth patterns.

Industry Clusters

A cluster is a geographic concentration of interrelated industries or occupations. The industry cluster in the Maury County Labor Shed with the highest relative concentration is Auto/Auto-related with a location quotient of 2.84. This cluster employs 23,737 workers in the region with an average wage of \$53,700. Employment in the Auto/Auto-related cluster is projected to expand in the region about 2.2% per year over the next ten years.

Industry Clusters for Maury County Labor Shed as of 2014Q3

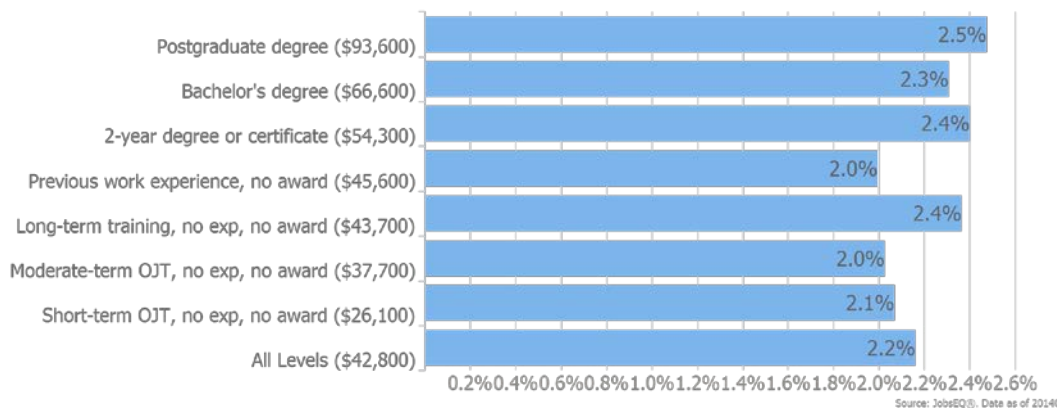


Location quotient and average wage data are derived from the Quarterly Census of Employment and Wages, provided by the Bureau of Labor Statistics, imputed where necessary, and updated through 2014Q1 with preliminary estimates updated to 2014Q3. Forecast employment growth uses national projections from the Bureau of Labor Statistics adapted for regional growth patterns.

Education Levels

Expected growth rates for occupations vary by the education and training required. While all employment in the Maury County Labor Shed is projected to grow 2.2% over the next ten years, occupations typically requiring a postgraduate degree are expected to grow 2.5% per year, those requiring a bachelor's degree are forecast to grow 2.3% per year, and occupations typically needing a 2-year degree or certificate are expected to grow 2.4% per year.

Annual Average Projected Job Growth by Training Required for Maury County Labor Shed



Employment by occupation data are estimates as of 2014Q3. Education levels of occupations are based on BLS assignments. Forecast employment growth uses national projections from the Bureau of Labor Statistics adapted for regional growth patterns.

Region Definitions

Maury County Labor Shed is defined as the following zip code tabulation areas: ZCTA 37014 (Rutherford County, TN portion); ZCTA 37014 (Williamson County, TN portion); ZCTA 37019; ZCTA 37020 (Bedford County, TN portion); ZCTA 37025 (Dickson County, TN portion); ZCTA 37025 (Hickman County, TN portion); ZCTA 37025 (Williamson County, TN portion); ZCTA 37027 (Davidson County, TN portion); ZCTA 37027 (Williamson County, TN portion); ZCTA 37029; ZCTA 37033; ZCTA 37034 (Bedford County, TN portion); ZCTA 37034 (Marshall County, TN portion); ZCTA 37046 (Marshall County, TN portion); ZCTA 37046 (Rutherford County, TN portion); ZCTA 37046 (Williamson County, TN portion); ZCTA 37047 (Giles County, TN portion); ZCTA 37047 (Marshall County, TN portion); ZCTA 37055 (Dickson County, TN portion); ZCTA 37060 (Bedford County, TN portion); ZCTA 37060 (Rutherford County, TN portion); ZCTA 37060 (Williamson County, TN portion); ZCTA 37062 (Williamson County, TN portion); ZCTA 37064 (Williamson County, TN portion); ZCTA 37067; ZCTA 37069; ZCTA 37091 (Bedford County, TN portion); ZCTA 37091 (Marshall County, TN portion); ZCTA 37091 (Maury County, TN portion); ZCTA 37098; ZCTA 37128; ZCTA 37129; ZCTA 37135 (Williamson County, TN portion); ZCTA 37137; ZCTA 37144 (Giles County, TN portion); ZCTA 37144 (Marshall County, TN portion); ZCTA 37153 (Rutherford County, TN portion); ZCTA 37160 (Bedford County, TN portion); ZCTA 37167; ZCTA 37174 (Maury County, TN portion); ZCTA 37174 (Williamson County, TN portion); ZCTA 37179; ZCTA 37180; ZCTA 37203; ZCTA 37204; ZCTA 37205; ZCTA 37210; ZCTA 37211; ZCTA 37212; ZCTA 37215 (Davidson County, TN portion); ZCTA 37217; ZCTA 37220; ZCTA 38401 (Marshall County, TN portion); ZCTA 38401 (Maury County, TN portion); ZCTA 38401 (Williamson County, TN portion); ZCTA 38449 (Giles County, TN portion); ZCTA 38451 (Giles County, TN portion); ZCTA 38451 (Marshall County, TN portion); ZCTA 38451 (Maury County, TN portion); ZCTA 38454; ZCTA 38456 (Giles County, TN portion); ZCTA 38456 (Lawrence County, TN portion); ZCTA 38459 (Giles County, TN portion); ZCTA 38459 (Lincoln County, TN portion); ZCTA 38461 (Lewis County, TN portion); ZCTA 38461 (Maury County, TN portion); ZCTA 38462 (Hickman County, TN portion); ZCTA 38462 (Lewis County, TN portion); ZCTA 38464 (Lawrence County, TN portion); ZCTA 38472 (Giles County, TN portion); ZCTA 38472 (Marshall County, TN portion); ZCTA 38474 (Giles County, TN portion); ZCTA 38474 (Lawrence County, TN portion); ZCTA 38474 (Lewis County, TN portion); ZCTA 38474 (Maury County, TN portion); ZCTA 38476 (Hickman County, TN portion); ZCTA 38476 (Maury County, TN portion); ZCTA 38476 (Williamson County, TN portion); ZCTA 38478; ZCTA 38482; ZCTA 38483 (Giles County, TN portion); ZCTA 38483 (Lawrence County, TN portion); ZCTA 38483 (Lewis County, TN portion); ZCTA 38483 (Maury County, TN portion); ZCTA 38487 (Hickman County, TN portion); ZCTA 38487 (Maury County, TN portion)

Maury County Labor Shed is defined as the following zip code tabulation areas: ZCTA 37014 (Rutherford County, TN portion); ZCTA 37014 (Williamson County, TN portion); ZCTA 37019; ZCTA 37020 (Bedford County, TN portion); ZCTA 37025 (Dickson County, TN portion); ZCTA 37025 (Hickman County, TN portion); ZCTA 37025 (Williamson County, TN portion); ZCTA 37027 (Davidson County, TN portion); ZCTA 37027 (Williamson County, TN portion); ZCTA 37029; ZCTA 37033; ZCTA 37034 (Bedford County, TN portion); ZCTA 37034 (Marshall County, TN portion); ZCTA 37046 (Marshall County, TN portion); ZCTA 37046 (Rutherford County, TN portion); ZCTA 37046 (Williamson County, TN portion); ZCTA 37047 (Giles County, TN portion); ZCTA 37047 (Marshall County, TN portion); ZCTA 37055 (Dickson County, TN portion); ZCTA 37060 (Bedford County, TN portion); ZCTA 37060 (Rutherford County, TN portion); ZCTA 37060 (Williamson County, TN portion); ZCTA 37062 (Williamson County, TN portion); ZCTA 37064 (Williamson County, TN portion); ZCTA 37067; ZCTA 37069; ZCTA 37091 (Bedford County, TN portion); ZCTA 37091 (Marshall County, TN portion); ZCTA 37091 (Maury County, TN portion); ZCTA 37098; ZCTA 37128; ZCTA 37129; ZCTA 37135 (Williamson County, TN portion); ZCTA 37137; ZCTA 37144 (Giles County, TN portion); ZCTA 37144 (Marshall County, TN portion); ZCTA 37153 (Rutherford County, TN portion); ZCTA 37160 (Bedford County, TN portion); ZCTA 37167; ZCTA 37174 (Maury County, TN portion); ZCTA 37174 (Williamson County, TN portion); ZCTA 37179; ZCTA 37180; ZCTA 37203; ZCTA 37204; ZCTA 37205; ZCTA 37210; ZCTA 37211; ZCTA 37212; ZCTA 37215 (Davidson County, TN portion); ZCTA 37217; ZCTA 37220; ZCTA 38401 (Marshall County, TN portion); ZCTA 38401 (Maury County, TN portion); ZCTA 38401 (Williamson County, TN portion); ZCTA 38449 (Giles

County, TN portion); ZCTA 38451 (Giles County, TN portion); ZCTA 38451 (Marshall County, TN portion); ZCTA 38451 (Maury County, TN portion); ZCTA 38454; ZCTA 38456 (Giles County, TN portion); ZCTA 38456 (Lawrence County, TN portion); ZCTA 38459 (Giles County, TN portion); ZCTA 38459 (Lincoln County, TN portion); ZCTA 38461 (Lewis County, TN portion); ZCTA 38461 (Maury County, TN portion); ZCTA 38462 (Hickman County, TN portion); ZCTA 38462 (Lewis County, TN portion); ZCTA 38464 (Lawrence County, TN portion); ZCTA 38472 (Giles County, TN portion); ZCTA 38472 (Marshall County, TN portion); ZCTA 38474 (Giles County, TN portion); ZCTA 38474 (Lawrence County, TN portion); ZCTA 38474 (Lewis County, TN portion); ZCTA 38474 (Maury County, TN portion); ZCTA 38476 (Hickman County, TN portion); ZCTA 38476 (Maury County, TN portion); ZCTA 38476 (Williamson County, TN portion); ZCTA 38478; ZCTA 38482; ZCTA 38483 (Giles County, TN portion); ZCTA 38483 (Lawrence County, TN portion); ZCTA 38483 (Lewis County, TN portion); ZCTA 38483 (Maury County, TN portion); ZCTA 38487 (Hickman County, TN portion); ZCTA 38487 (Maury County, TN portion)

Nashville-Davidson--Murfreesboro, TN MSA is defined as the following counties: Cannon County, Tennessee; Cheatham County, Tennessee; Davidson County, Tennessee; Dickson County, Tennessee; Hickman County, Tennessee; Macon County, Tennessee; Robertson County, Tennessee; Rutherford County, Tennessee; Smith County, Tennessee; Sumner County, Tennessee; Trousdale County, Tennessee; Williamson County, Tennessee; Wilson County, Tennessee

FAQ

What is a location quotient?

A location quotient (LQ) is a measurement of concentration in comparison to the nation. An LQ of 1.00 indicates a region has the same concentration of an industry (or occupation) as the nation. An LQ of 2.00 would mean the region has twice the expected employment compared to the nation and an LQ of 0.50 would mean the region has half the expected employment in comparison to the nation.

What is replacement demand?

Replacement demand is the number of jobs required due to replacements—retirements and turnover resulting from workers moving from one occupation into another. Note that replacement demand does not include all turnover—it does not include when workers stay in the same occupation but switch employers. The replacement demand shown in this report may also be understated; thus, it can be taken to be a minimum measure of the number of workers who will need to be trained for the occupation due to replacements. The total projected demand for an occupation is the sum of the replacement demand and the growth demand (which is the increase or decrease of jobs in an occupation expected due to expansion or contraction of the overall number of jobs in that occupation).

What is a cluster?

A cluster is a geographic concentration of interrelated industries or occupations. If a regional cluster has a location quotient of 1.25 or greater, the region is considered to possess a *competitive advantage* in that cluster.

What is the difference between industry wages and occupation wages?

Industry wages and occupation wages are estimated via separate data sets, often the time periods being reported do not align, and wages are defined slightly differently in the two systems (for example, certain bonuses are included in the industry wages but not the occupation wages). It is therefore common that estimates of the average industry wages and average occupation wages in a region do not match exactly.

What is NAICS?

The North American Industry Classification System (NAICS) is used to classify business establishments according to the type of economic activity. The NAICS Code comprises six levels, from the “all industry” level to the 6-digit level. The first two digits define the top level category, known as the “sector,” which is the level examined in this report.

What is SOC?

The Standard Occupational Classification system (SOC) is used to classify workers into occupational categories. All workers are classified into one of over 820 occupations according to their occupational definition. To facilitate classification, occupations are combined to form 23 major groups, 96 minor groups, and 449 occupation groups. Each occupation group includes detailed occupations requiring similar job duties, skills, education, or experience.

About This Report

This report and all data herein were produced by JobsEQ®, a product of Chmura Economics & Analytics. The information contained herein was obtained from sources we believe to be reliable. However, we cannot guarantee its accuracy and completeness.